

## 6.閉 殼 筋 (Adductor muscle)

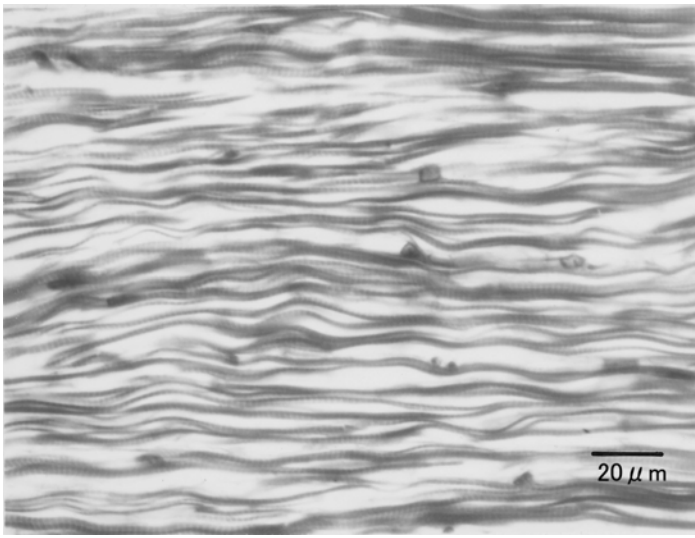


图.6.1

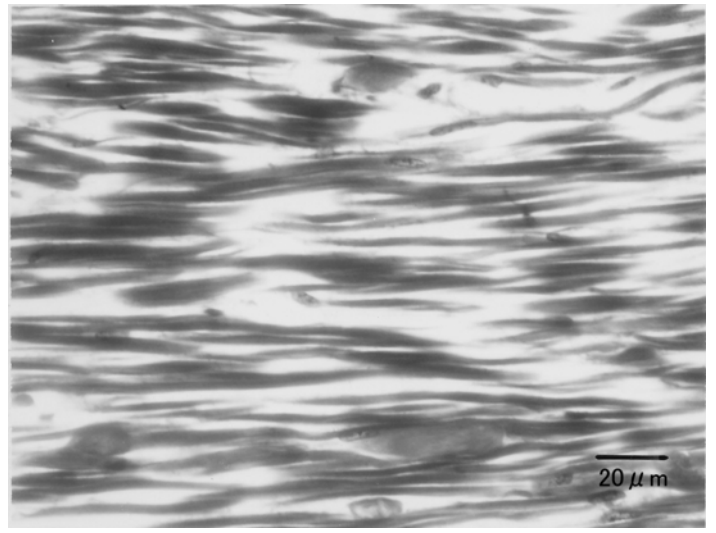


图.6.2

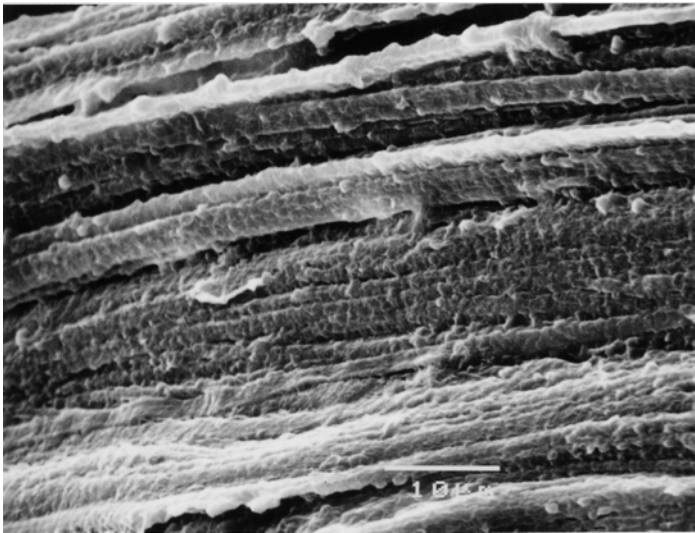


图.6.3

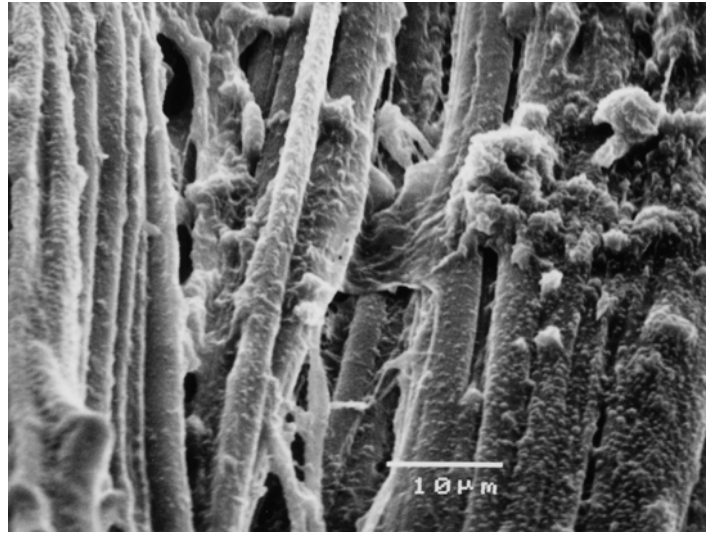


图.6.4

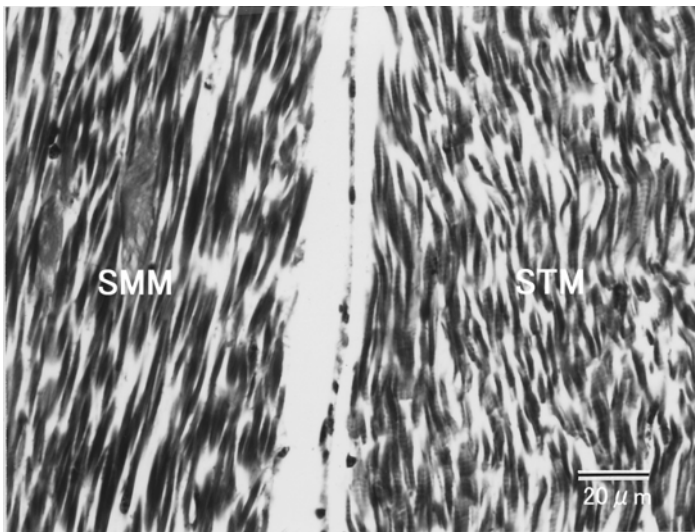


图.6.5

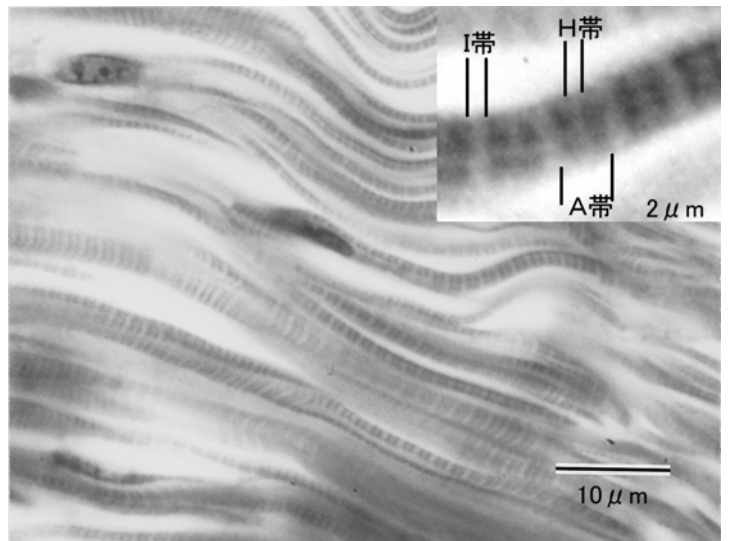


图.6.6

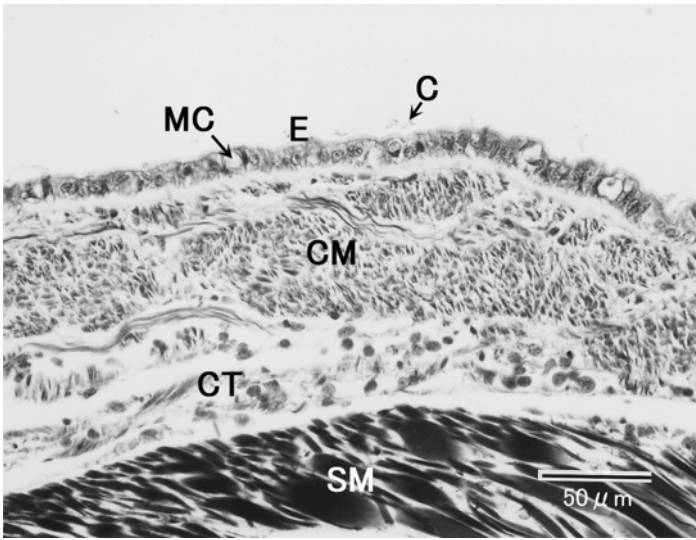


图.6.7

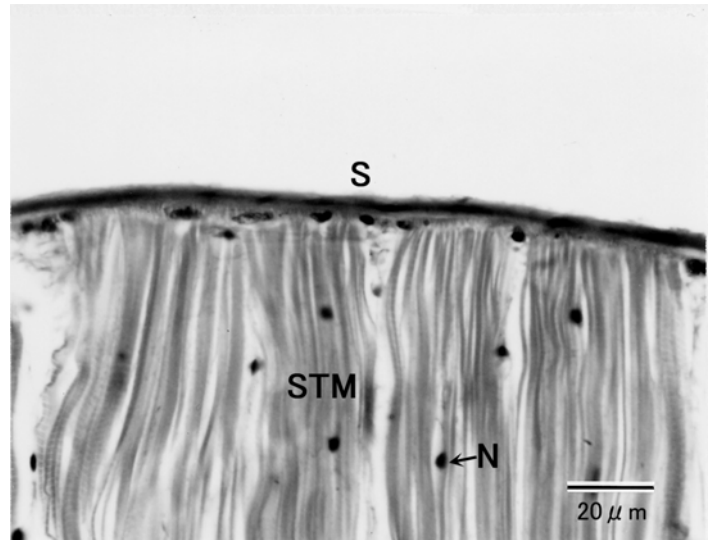


图.6.8

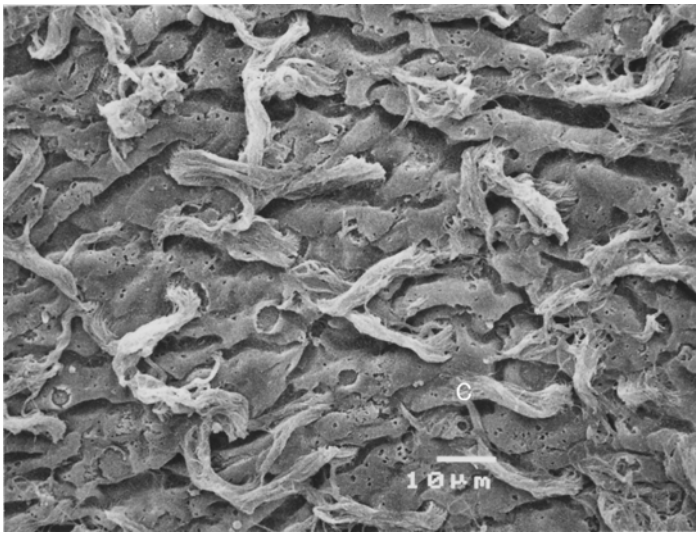


图.6.9

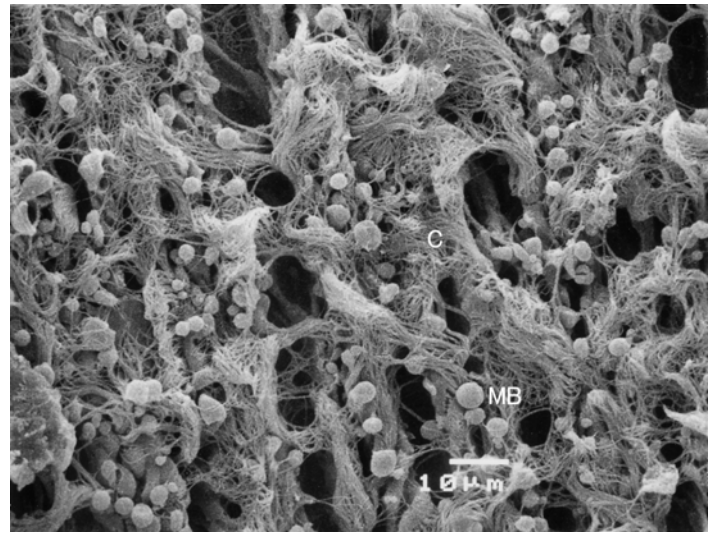


图.6.10

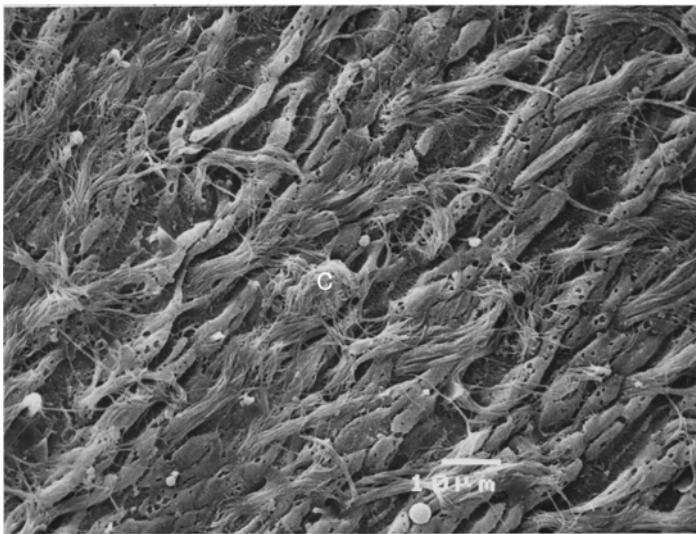


图.6.11

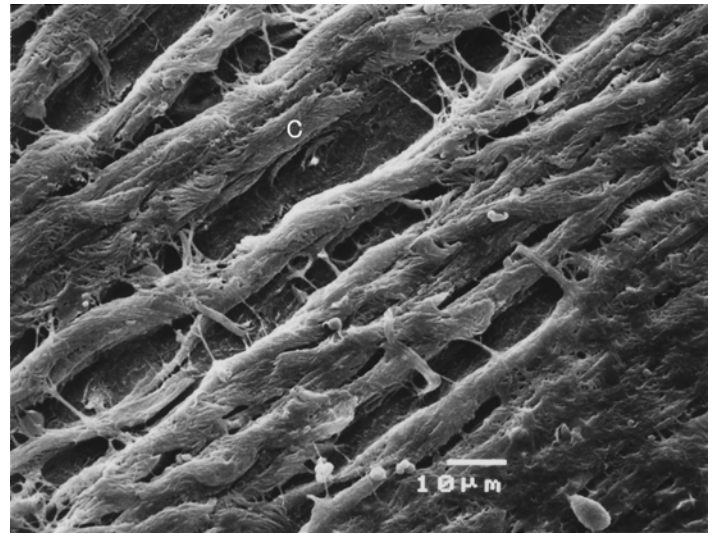


图.6.12

図.6.1. 有紋筋(striated muscle)の組織図.

図.6.2. 平滑筋(smooth muscle)の組織図.

図.6.3. 有紋筋(striated muscle)の電顕像.

図.6.4. 平滑筋(smooth muscle)の電顕像.

図.6.5. 有紋筋(striated muscle)と平滑筋(smooth muscle)との境界面の組織図. SMM:平滑筋(smooth muscle), STM: 有紋筋(striated muscle)

図.6.6. 有紋筋(striated muscle)の組織図. A帯(A band), H帯(H band), I帯(I band).

図.6.7.平滑筋(smooth muscle)の表皮(epithelium)付近の組織図. C:繊毛(cilia), CM:環状平滑筋(circular smooth muscle), CT:結合組織(connective tissue), E:表皮(epithelium), MC:粘液細胞(mucus cell), SM:平滑筋(smooth muscle)

図.6.8. 有紋筋(striated muscle)と殻(shell)との境界面. STM:有紋筋(striated muscle), N:核(nuclei), S:殻(shell)

図.6.9. 腎臓(kidney)付近の閉殻筋(adductor muscle)電顕像. C:繊毛(cilia)

図.6.10. 鰓(gill)付近の閉殻筋(adductor muscle)電顕像. C:繊毛(cilia), M:粘液ボール(mucus ball)

図.6.11. 生殖腺(gonad)と直腸(rectum)の間の閉殻筋(adductor muscle)電顕像. C:繊毛(cilia)

図.6.12. 直腸(rectum)付近の閉殻筋(adductor muscle)電顕像. C:繊毛(cilia)