

# 10. 殼

## ( Shell )

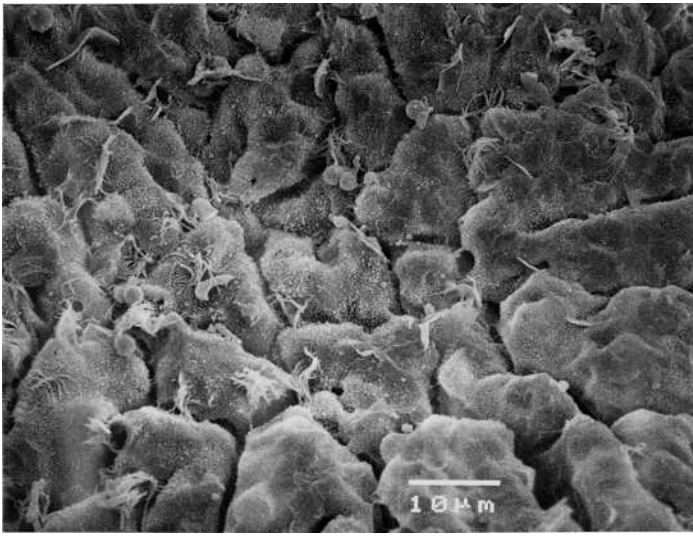


图.10.1

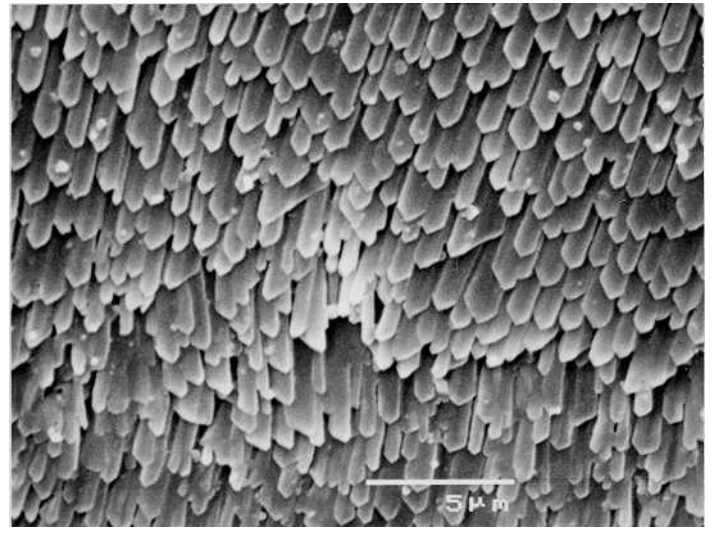


图.10.2

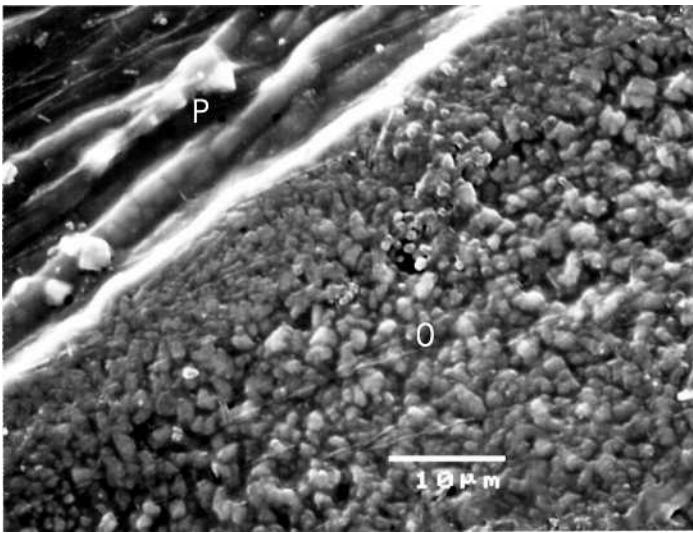


图.10.3

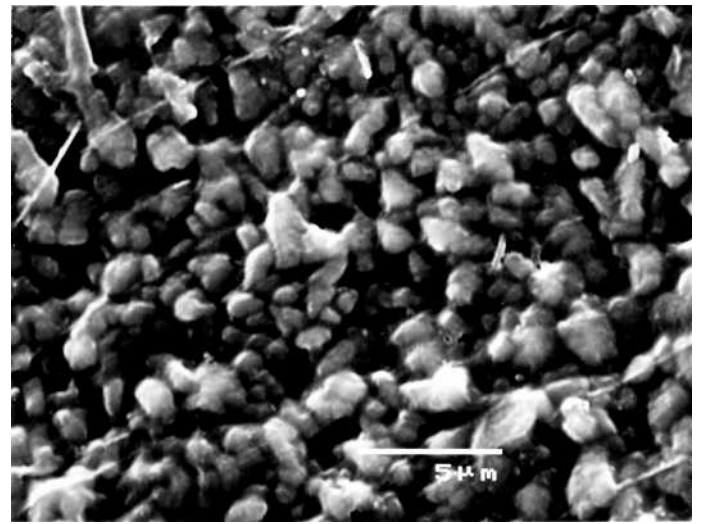


图.10.4

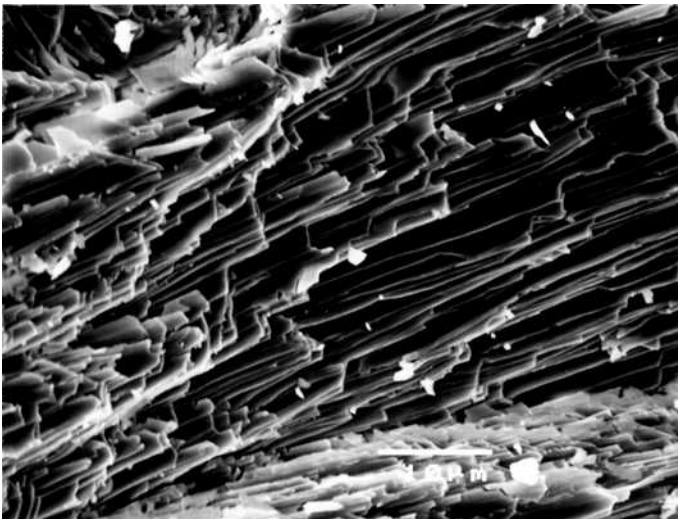


图.10.5

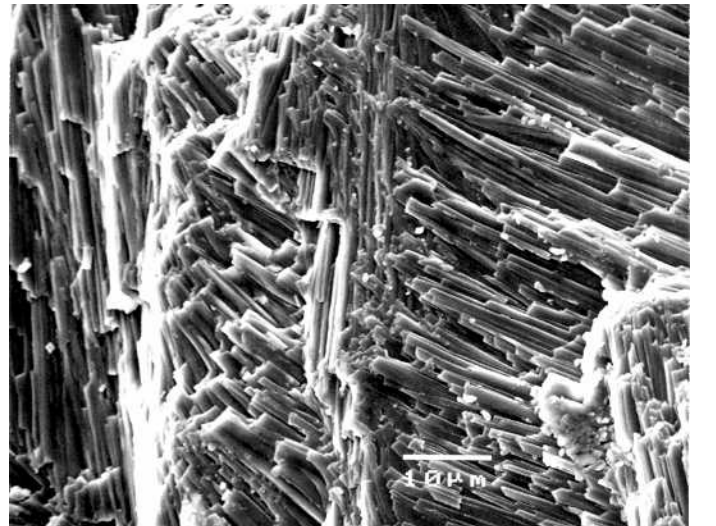


图.10.6

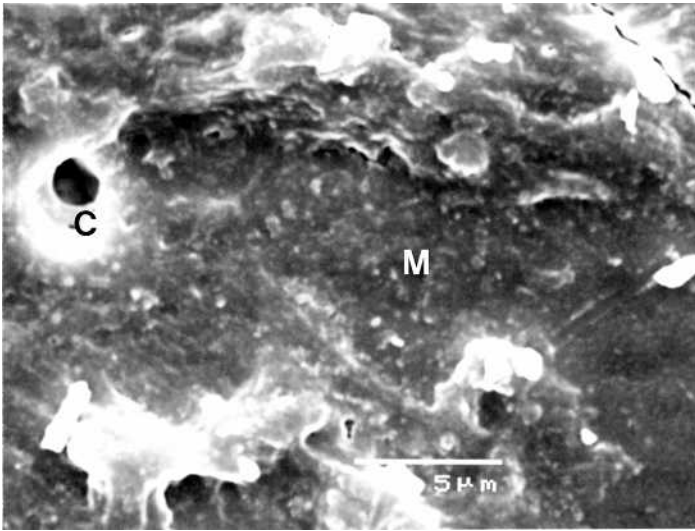


图.10.7

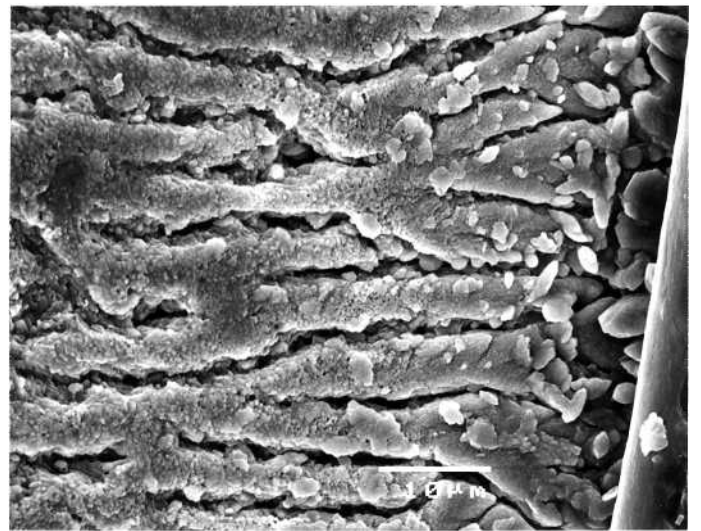


图.10.8

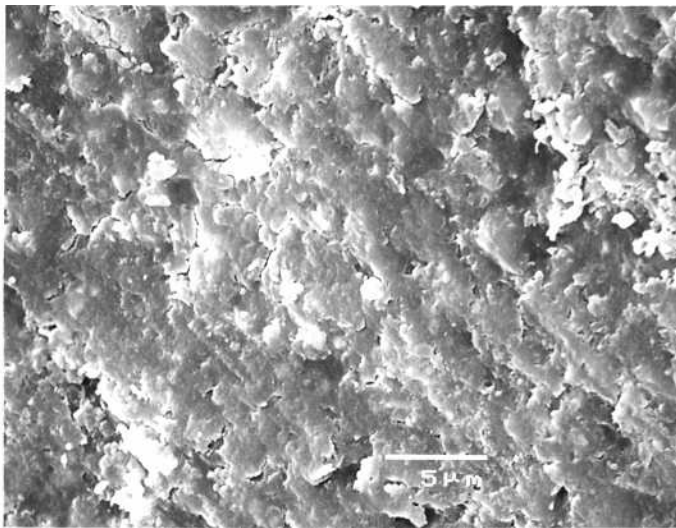


图.10.9

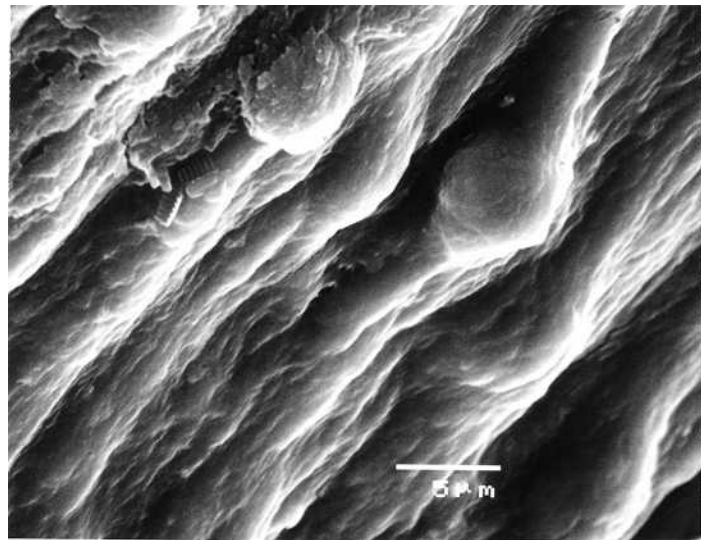


图.10.10

図.10.1. 殻皮層(peristracum)の電顕像.

図.10.2. 葉状構造(foliated structure)の殻質層(ostracum)の電顕像.

図.10.3. 貝殻縁辺部の貝殻内側の電顕像. O:殻質層(ostracum), P:殻皮層(peristracum)

図.10.4. 貝殻縁辺部の殻質層(ostracum)の電顕像.

図.10.5. 貝殻縁辺部の殻質層(ostracum)内部の葉状構造(foliated structure)の電顕像.

図.10.6. 貝殻中央部の殻質層(ostracum)内部の電顕像の交差板構造(crossed lamellar structure)の電顕像.

図.10.7. 閉殻筋(adductor muscle)付着部の貝殻の電顕像. C:管状構造(canal structure), M:光輝構造(myostracum)

図.10.8. 弾帯受(chondrophore)の電顕像.

図.10.9. 靱帯(resilium)の表面の電顕像.

図.10.10. 靱帯(resilium)の内部の電顕像.