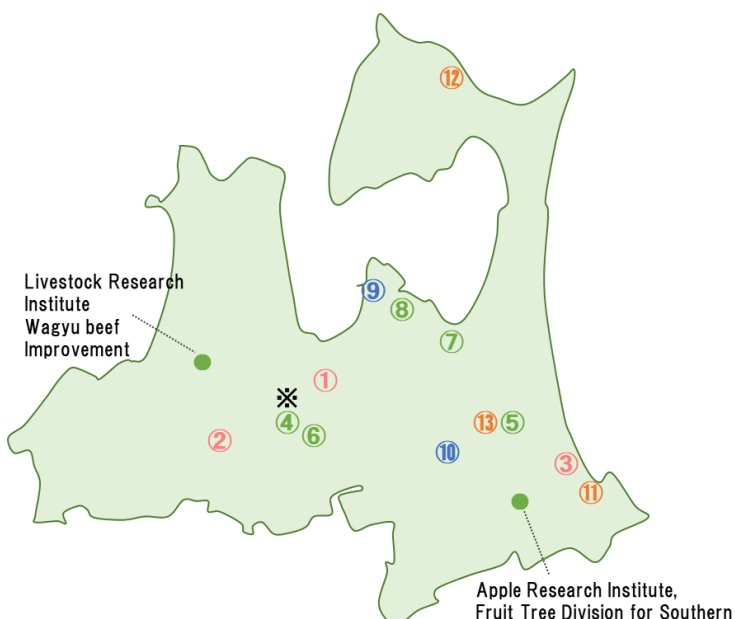
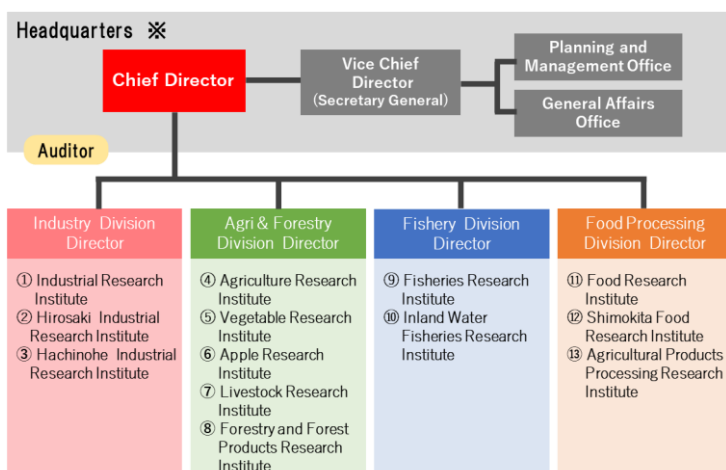


“Aiming to become a research facility for the industrial revitalization of Aomori Prefecture”

Our center was established in April 2009 with the goal of promoting and developing the prefectural industry, and represented the only research facility operating as a local incorporated administrative agency in the prefecture.

It is the first comprehensive research facility in Japan that links 13 research institutes across four different fields: industry, agriculture and forestry, fishery, and food processing. In addition to conducting research in each of these fields, the numerous activities of the center have included the creation of new products based on cross-fields cooperative R&D and research results.

Our goal is to continue and develop our activities in the future as a research facility that enjoys the support and trust of the prefectural citizens. Thus, we have created our slogan, “Using technology to support the future of Aomori”, to ensure all our employees do their best to carry out their daily tasks with a sense of duty and responsibility in order to further improve our research results. We hope everyone can benefit greatly from the activities of our center.



Department of Industry

The research institutes of the industry division are located in three cities: Aomori, Hirosaki, and Hachinohe.

The goal of their activities is to promote the prefectural industry by tackling technological issues of the businesses in the prefecture, performing requested tests, lending equipments, offering technological consultations, and conducting R&D to respond to the needs of businesses, etc. We help businesses put their ideas into practice.

① Industrial Research Institute

This institute conducts research on information and communications technologies, automatic control technologies, measurement and evaluation technologies, technologies for reducing and removing environmentally hazardous substances, technologies for extraction of fragrances and functional ingredients, heat recovery technologies, technologies for efficient use of waste heat, hydrogen utilization technologies (fuel cells), and system control technologies.

② Hirosaki Industrial Research Institute

This institute develops food ingredients and brew as well as beauty and health related ingredients and products by utilizing the natural resources of Aomori prefecture.

It also creates traditional craft prototypes and industrial design, and offers support for product development from the design standpoint.

Furthermore, the institute supports business activities by offering technological consultations, performing requested tests, and providing related services.

③ Hachinohe Industrial Research Institute

Formerly known as the Machinery and Metal Laboratory, this institute offers technological support to improve product quality and reliability by technical consultations and conduction of shape measurements, non-destructive analyses, strength tests, etc.

In its R&D activities, the institute seeks to achieve improvements, automation, labor-saving technologies, and energy-saving technologies for processing methods and manufacturing processes in the fields of machinery, metal processing, and electronics.

Department of Agriculture and Forestry

The agriculture and forestry division consists of three research institutes in the agricultural field and a total of 5 research institutes in the fields of forestry and livestock production. The division performs tests, conducts research, and provides guidance related to production technologies, new variety development, and epidemic prevention in the fields of agriculture, forestry, and livestock production.

④ Agricultural Research Institute

This institute conducts research and provides guidance related to cultivation technologies, pest control, and production environments, with a focus on paddy rice, field crops, flowers and ornamental plants, greenhouse crops, and the like. In addition, the institute develops new varieties of paddy rice such as “Seiten No Hekireki” and conducts tests and research on plant factories suitable for cold climates.

⑤ Vegetable Research Institute

This institute conducts research and provides guidance related to cultivation and pest control technologies about vegetables. Subjects of research are Chinese yam, garlic, strawberry and other vegetables.

And furthermore, this institute develops varieties of above vegetables and propagates virusfree seedlings of Chinese yam and garlic.

These seedlings are supplied to “ZEN-NOH Aomori” and JA ‘Japan Agricultural Cooperatives’ as breeder’s stock.

⑥ Apple Research Institute

This institute conducts research on cultivation management technologies, storage management technologies, development of new varieties, pest control technologies, and other technologies with a focus on apples, grapes, cherries, peaches, and other fruit trees. In addition, the institute monitors the weather and examines the growth stage of fruit trees, fruit hypertrophy, ripeness, and amount of pests while providing useful information for production guidance.

⑦ Livestock Research Institute

This institute focuses on cattle, poultry, forage crops, and the like. The institute is aiming to develop feeding techniques based on regional feed resources such as feed rice, new livestock technologies including the areas of animal reproduction, and production and utilization techniques of forage crop and pasturage.

It also provides semen of excellent Japanese black sires such as the “Hirayasuhira”, the core sire of the Aomori prefecture, and chicks of local breed called the “Aomori Shamrock.”.

⑧ Forestry and Forest Products Research Institute

This institute conducts research and studies to contribute to a multifaceted approach to forestation and to the promotion of forestry and wood industry.

The institute carries out research on forest management and environment, forest pest control, development of new varieties of pollen-free Japanese cedars and Hibas, lumber production technologies for spreading the use of materials produced in the prefecture, and cultivation of special forest products such as mushrooms.

Department of Fisheries

The Fisheries Sector is divided into two research institutes, The Fisheries Research Institute and Inland Water Fisheries Research Institute.

The former researches about a marine environment and fishery resources, the latter about fishery resources for the fresh and brackish waters.

⑨ Fisheries Research Institute

This institute investigates the available fishery resources, methods of resource management, seed production and aquaculture, marine environment. In addition, it organizes a training course to educate a newcomer to fisherman.

⑩ Inland Water Fisheries Research Institute

This institute studies the aquaculture of chum salmon, cherry salmon, sockeye salmon, brackish water clams, and other organisms in inland waters.

The institute also studies related to the seed production of rainbow trout, cherry salmon, and other species, breeding, farming management, and disease control, environment monitoring.

Department of Food Processing

The goal of the Food Processing Division is to promote the processing industry in the field of agricultural and marine products in Aomori Prefecture. The Division has three research institutes which develop new processed products and carry out research on ingredient characteristics, conduct scientific research on technologies for maintaining product quality and freshness, and promote or provide guidance for processing technologies.

⑪ Food Research Institute

This institute uses the know-how related to processing technologies accumulated over time and analytic technologies to offer support for prefectural businesses and fishery professionals with a focus on the marine products obtained within or outside Aomori Prefecture.

The institute provides support and guidance for technological issues on processing sites and develops new processed marine products.

In addition, it contributes to marine product processing in Aomori Prefecture by carrying out research on freshness preservation and freezing technologies and by conducting scientific analyses and examinations.

⑫ Shimokita Food Research Institute

Our research field covers both agricultural and marine products, which is the differentiation point of our institute. We mainly conduct research on product quality component characteristics, and examine utilizable micro-organisms. Utilizing the advantage of regional resources, we cooperate with business operators to improve manufacturing processes and product recognition.

⑬ Agricultural Products Processing Research Institute

This institute studies the processing characteristics of agricultural and livestock products around the prefecture, researches the development and the improvement of the processing technique, spreads and teaches the techniques to processing companies, and does the technological assistance for commercialization.